

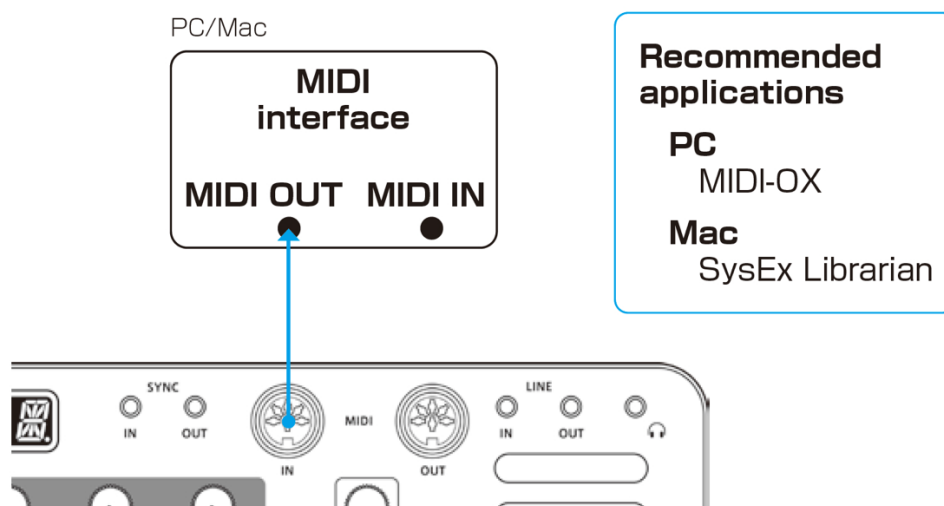
LIVEN Lofi-12 v2.0 Upgrade Guide

The upgrade process of the LIVEN Lofi-12 requires a **USB-MIDI interface**. You can use a USB audio interface with MIDI ports or an electronic musical instrument with USB-MIDI functionality (ex. SmpITrek v1.2).

Preparing to upgrade

Follow the instruction manual for your USB-MIDI interface, connect it to your PC/Mac, and configure the USB-MIDI settings.

Then, connect the **MIDI OUT of the USB-MIDI interface** to the **MIDI IN of the Lofi-12** with a MIDI cable.



And you will also need to download and install the following application on your PC/Mac.

[for PC]

Download and install the **MIDI-OX** application from the URL below.

<http://www.midiox.com/>

[for Mac]

Download and install the **SysEx Librarian** application from the URL below.

<https://www.snoize.com/SysExLibrarian/>

[Note] Use new batteries or an AC adapter.

Never interrupt the power during a firmware update.

Updating the firmware

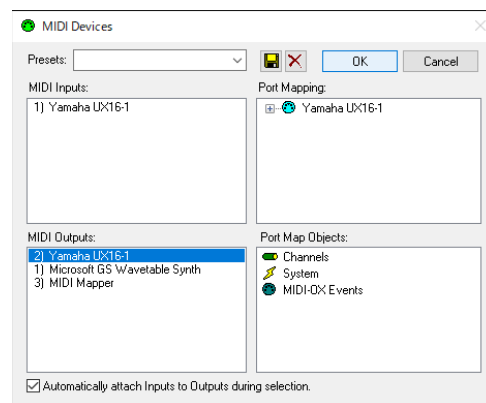
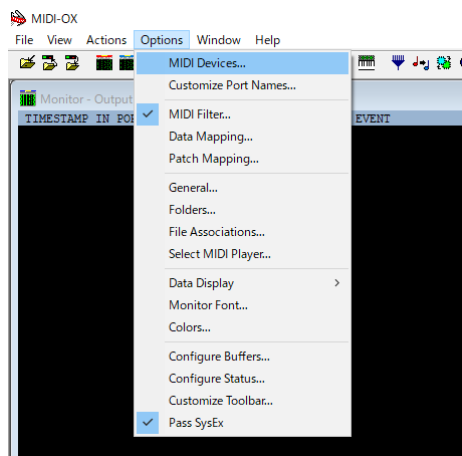
[for PC]

1 Press and hold the **shift** button + the **POWER** switch to turn on the Lofi-12.

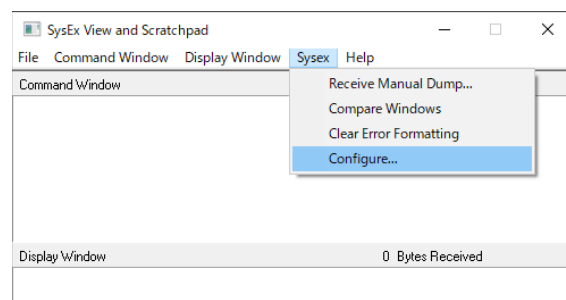
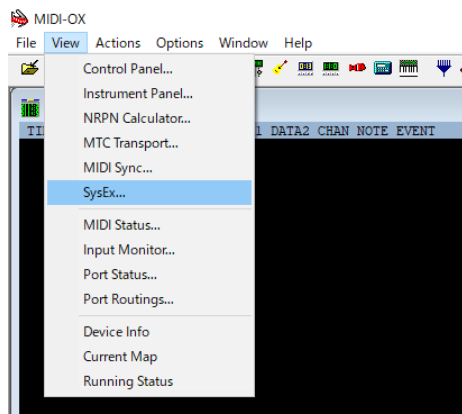
The Lofi-12 starts and **UPDT** appears on the display.

2 Double-click the **MIDI-OX** application to launch it.

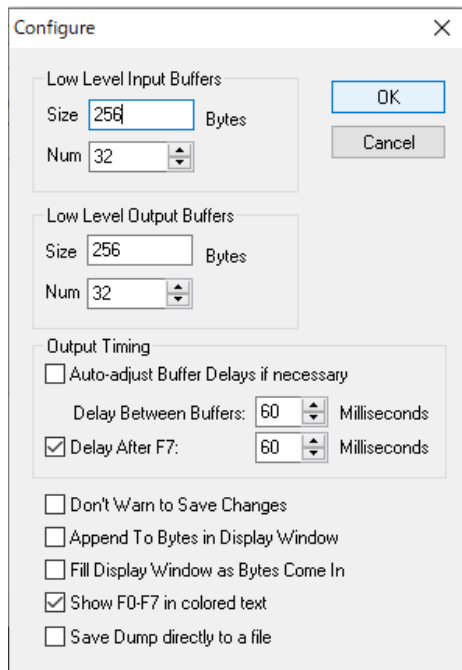
3 From the **Options** menu, select **MIDI Devices...** and select the USB-MIDI interface connected to your PC.



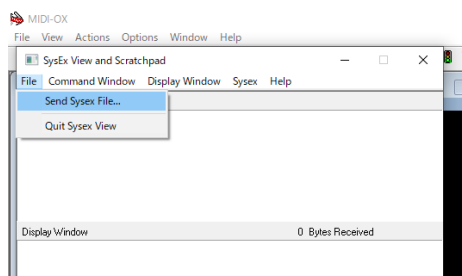
4 From the **View** menu, select **SysEx...** and select **Configure...** from the **Sysex** menu of the newly opened window.



5 Set the **Configure** settings as follows.



6 From the **File** menu, select **Send Sysex File...** and select the firmware file **LIVEN_LOFI_SYSTEM.syx** then click **OK**.



Data transmission begins.

RCV appears on the Lofi-12 display and the step LEDs indicate the progress of data transmission (transmission is complete when all are lit).

7 After the transmission is complete, press the **OK** button on the Lofi-12 to execute the update.

The step LED lights up to indicate progress.

When the update is successful, **OK** is displayed (if there is an error, the error code on P. 6 is displayed).

8 Restart the Lofi-12.

Updating the firmware

[for Mac]

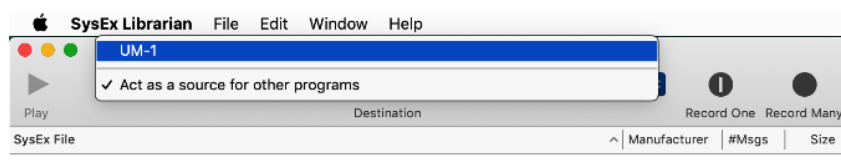
- 1 Press and hold the **shift** button + the POWER switch to turn on the Lofi-12.

The Lofi-12 starts and **UPDT** appears on the display.

- 2 Double-click the Firmware file **LIVEN_LOFI_SYSTEM.syx**.

The **SysEx Librarian** application starts up.

- 3 Click **Act as a source for other programs** and select the USB-MIDI interface connected to your Mac.



- 4 Click **Play** ▶.

Data transmission begins.

RCV appears on the Lofi-12 display and the step LEDs indicate the progress of data transmission (transmission is complete when all are lit).

- 5 After the transmission is complete, press the **OK** button on the Lofi-12 to execute the update.

The step LED lights up to indicate progress.

When the update is successful, **OK** is displayed (if there is an error, the error code on P. 6 is displayed).

- 6 Restart the Lofi-12.

Importing the Preset Drum kit samples

1 Press the **func** button + **SAMPLE** key on the Lofi-12 to enter **SAMPLE** & **EDIT** mode. (→P.37 in the original manual)

2 Select a slot to import the drum kit sample with the **VALUE** knob.

You can audition the current content of the selected slot by playing the keyboard.

3 Press **OK(→EDIT)** button to enable editing.

After **EDIT** appears on the display, all the step LEDs light up and the Lofi-12 enters a standby state for receiving data.

4 [for PC] in **MIDI-OX**, [for Mac] in **SysEx Librarian**, open the drum kit sample syx file.

Please refer to the above procedure for **Updating the firmware**.

5 Start transmitting data from the application.

The Lofi-12 receives the data but the display will not change to reflect this.

When the transmission is complete, the display will show **RCV** followed by the name of the imported sample.

6 Press **OK(SAVE)** button twice to save it.

Repeat the above procedure to import the drum kit sample files to new sample slots.

Press the **CLR(EXIT)** button to return to the regular mode when you are finished.

Set up the Preset Drum kit sample

Select a drum kit sample in the sample selection, then hold down the **func** button and press the **MODE [VOICE]** button several times to select **DRUM**.

The drum kit can be played on the 8 white keys from the left end of the keyboard. (→P.4 in the v2.0 manual supplement)

Troubleshooting

Error codes

<System related>

ER.10 : System error

ER.11: Low battery

<Data Receiving related>

ER.20 : Data receiving error

ER.21 : Invalid data

ER.22 : No need to update (Boot)

<Update related>

ER.30 : Update failed

After updating, the system status can be checked with the following button LEDs.

(Green for normal, red for abnormal)

PTN button: Preset, 1/3 button: Main, 2/4 button: Boot

If the firmware update fails, adjust the buffer size and transmission speed, and transmit the syx file again.

[for PC]

In the Configure menu, double the Num and Size values for **Low Level Output Buffers** and try to transmitting it again.

If it does not work, double the **Delay Between Buffers** and **Delay After F7** values in the **Output Timing** section.

[for Mac]

In the Preferences, try lowering the **Transmit Speed** tab.

If it does not work, try reducing the speed further.